

Pumpe

HPL PA 26 DSV G6 G6 R ST..



ISTRUZIONI PER L'ORDINAZIONE
ORDERING INSTRUCTIONS
BESTELLANLEITUNG

HPL..2

HPL PA 2 11 D M L G4 G4 B ST ..

SERIE
SERIES
SERIE

PRODOTTO
PRODUCT
PRODUKT

MA - Motore
PA - Pompa singola
PT - Pompa predisposta

MA - Motor
PA - Pump
PT - Adapted Pump

MA - Motor
PA - Pumpe
PT - Vorbereitete Pumpe

GRUPPO
GROUP
BAUGRÖSSE

2

CILINDRATA
DISPLACEMENT
FÖRDERVOLUMEN

05 - 4,50
06 - 6,00
08 - 8,50
11 - 11,00
14 - 14,50
17 - 17,00
20 - 19,50
26 - 26,00
34 - 34,00
40 - 40,50

SENSO DI ROTAZIONE
ROTATION
DREHRICHTUNG

S - Antioraria/sinistra
D - Oraria/destra
H - Bidirezionale drenaggio interno
B - Bidirezionale drenaggio esterno posteriore

S - Counterclockwise
D - Clockwise
H - Reversible ind drain
B - Reversible rear. drain. pont

S - Linkslauf
D - Rechtslauf
H - reversibel, Lecköl intern, Anschluß seitlich
B - reversibel, Lecköl extern, Anschluß hinten

* Non disponibile per cilindrata 05
* Not available for displacement 05
* Nicht verfügbar für fördervolumen 05

SET VALVOLE
VALVE SETTING
VENTILEINSTELLUNG (bar)

COPERCHI - COVERS - DECKEL

ST - Standard
SG - Versione in ghisa
Cast iron version
Gussversion
V.. - Con valvole (Vedi sez. valvole)
With valves (See valves section)
Mit Ventilen
(siehe Abschnitt Ventile)

GUARNIZIONI - SEALS - DICHTUNGEN

B - NBR V - Viton
R - NBR alte pres. (picco 25 bar) W - Viton alte pres. (picco 25 bar)
For high pres. (peak 25 bar) For high pres. (peak 25 bar)
Hochdruck (spitzen 25 bar) Hochdruck (spitzen 25 bar)

BOCCHIE STD - STANDARD PORT - STANDARD ANSCHLÜSSE
CILINDRATA - DISPLACEMENT - FÖRDER-/SCHLUCKVOLUMEN

5.....8		11	14.....20		26	34.....40		
Pompe - Pumpen	IN/OUT	Pompe - Pumpen	IN/OUT	Pompe - Pumpen	IN/OUT	Pompe - Pumpen	IN/OUT	DRAIN
E3	E3		E5	E3	E5	E5	E5	M2
G4	G4		G6	G4	G6	G6	G7	G6
X5	X4	X6	X4	X6	X5	X8	X6	M2
U6	U5		U6	U5	U6	U5	U7	U6
N4	N4*		N6	N4	N7	N6	N7	N6
C6	C5		C6	C5	C6	C5		U3
T6	T4		T6	T4	T6	T4		G3

MOTORI - MOTORS - MOTOREN OUT/IN
MOTORI BIDIR. IN=OUT - REVERS. MOTORS IN=OUT -
BIDIREK.MOTOREN IN=OUT

FLANGIA ANTERIORE
FRONT FLANGE
VORDERER FLANSCH

L - Europea in ghisa
M - Europea
N - Tedesca
O - Tedesca D 50 2 fori DX
P - Tedesca D 50 2 fori SX
Q - SAE A 2 fori in ghisa
R - Tedesca D 52
S - SAE A 2 fori
T - SAE B 2 fori in ghisa
U - Perkins
V - Tedesca in ghisa

L - European cast iron
M - European
N - German
O - German D 50 2 holes right
P - German D 50 2 holes left
Q - SAE A 2 holes cast iron
R - German D 52
S - SAE A 2 holes
T - SAE B 2 holes cast iron
U - Perkins
V - German cast iron

L - EU-Norm Guß
M - EU-Norm
N - DIN-Norm
O - DIN-Norm D 50 Bohrungen rechts
P - DIN-Norm D 50 Bohrungen links
Q - SAE A 2 Bohrungen Guß
R - DIN-Norm D 52
S - SAE A 2 Bohrungen
T - SAE B 2 Bohrungen Guß
U - Perkins
V - Din gussversion

ESTREMITÀ D'ALBERO
SHAFT PROFIL
WELLENENDE

L - Conico (1:8)
M - Conico (1:5)
N - Cilindrico D15 europeo
P - Cilindrico SAE "A"
U - Scanalato DIN 5482
V - Scanalato SAE "A" 9T
X - Scanalato SAE "A" 11T
Y - Scanalato SAE "B" 13T
Z - Dente frontale

L - Tapered (1:8)
M - Tapered (1:5)
N - D15 European parallel shaft
P - SAE "A" parallel shaft
U - DIN 5482 splined
V - SAE "A" 9T splined
X - SAE "A" 11T splined
Y - SAE "B" 13T splined
Z - Tang drive

L - Kegel (1:8)
M - Kegel (1:5)
N - zylindrisch D15 (E-norm)
P - zylindrisch SAE "A"
U - Keilwelle DIN 5482
V - Keilwelle SAE "A" 9T
X - Keilwelle SAE "A" 11T
Y - Keilwelle SAE "B" 13T
Z - Kreuzprofil

destra

Pompe

HPL PA 26 DSVGG6G6RST

HPL ..2

POMPE E MOTORI AD INGRANAGGI
GEAR PUMPS AND MOTORS
ZAHNRADPUMPEN UND -MOTOREN

HPL PA2

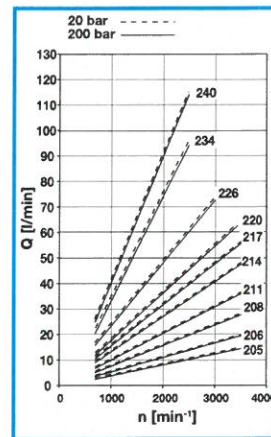
POMPE AD INGRANAGGI
GEAR PUMPS
ZAHNRADPUMPEN

DATI TECNICI
TECHNICAL DATA
TECHNISCHE MERKMALE



DIAGRAMMA PORTATE
DIAGRAMS
KENNLINIEN

GRUPPO GROUP BAUREIHE	TIPO TYPE TYP	CILINDRATA TEORICA DISPLACEMENT FÖRDERVOLUMEN (l/m)		CONTINUA CONTINUOUS DAUER		PRESSIONE PRESSURE DRUCK INTERMITTENTE INTERMITTIERENDER		PICCO PEAK SPITZEN		VELOCITÀ DI ROTAZIONE SPEED DREHZAHL		MASSA WEIGHT GEWICHT	
		cm ³	in ³	bar	psi	bar	psi	bar	psi	MAX	MIN	kg	lbs
2	05	4,50	0,27	240	3481	260	3771	300	4351	3500	700	2,30	5,07
	06	6,00	0,37	240	3481	260	3771	300	4351			2,40	5,29
	08	8,50	0,52	230	3336	250	3626	280	4061			2,40	5,29
	11	11,00	0,67	230	3336	250	3626	280	4061			2,40	5,29
	14	14,50	0,88	230	3336	250	3626	280	4061			2,80	6,17
	17	17,00	1,04	230	3336	250	3626	280	4061			2,80	6,17
	20	19,50	1,19	200	2901	220	3191	250	3626			2,80	6,17
	26	26,00	1,59	180	2611	190	2756	210	3046			3,10	6,83
	34	34,00	2,07	150	2175	170	2466	190	2756			3,40	7,50
	40	40,50	2,47	140	2031	160	2321	180	2611			2500	3,60



HPL MA2

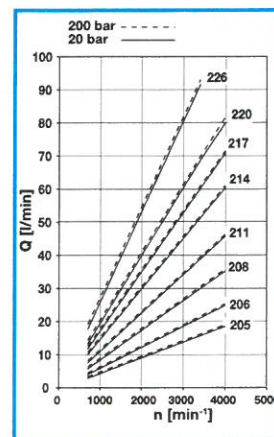
MOTORI AD INGRANAGGI
GEAR MOTORS
ZAHNRADMOTOREN

DATI TECNICI
TECHNICAL DATA
TECHNISCHE MERKMALE



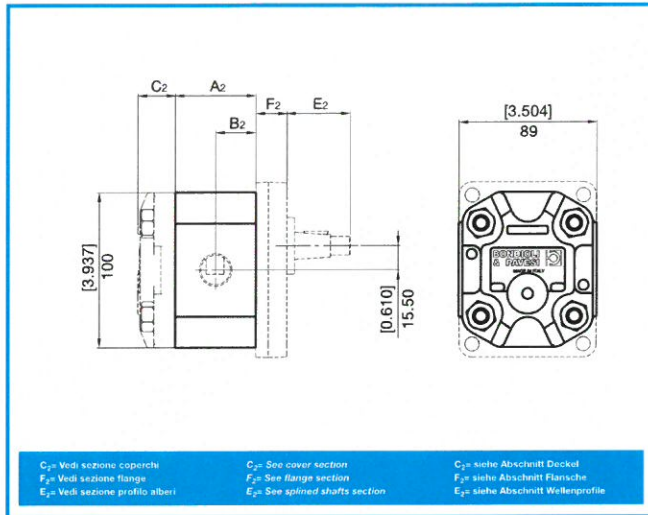
DIAGRAMMA PORTATE
DIAGRAMS
KENNLINIEN

GRUPPO GROUP BAUREIHE	TIPO TYPE TYP	CILINDRATA TEORICA DISPLACEMENT FÖRDERVOLUMEN (l/m)		CONTINUA CONTINUOUS DAUER		PRESSIONE PRESSURE DRUCK INTERMITTENTE INTERMITTIERENDER		PICCO PEAK SPITZEN		VELOCITÀ DI ROTAZIONE SPEED DREHZAHL		MASSA WEIGHT GEWICHT	
		cm ³	in ³	bar	psi	bar	psi	bar	psi	MAX	MIN	kg	lbs
	06	6,00	0,37	240	3481	260	3771	300	4351	4000	700	2,40	5,29
	08	8,50	0,52	230	3336	250	3626	280	4061			2,40	5,29
	11	11,00	0,67	230	3336	250	3626	280	4061			2,40	5,29
	14	14,50	0,88	230	3336	250	3626	280	4061			2,80	6,17
	17	17,00	1,04	230	3336	250	3626	280	4061			2,80	6,17
	20	19,50	1,19	200	2901	220	3191	250	3626			2,80	6,17
26	26,00	1,59	180	2611	190	2756	210	3046	3400	3,10	6,83		



**DIMENSIONI
SIZE
ABMESSUNGEN**

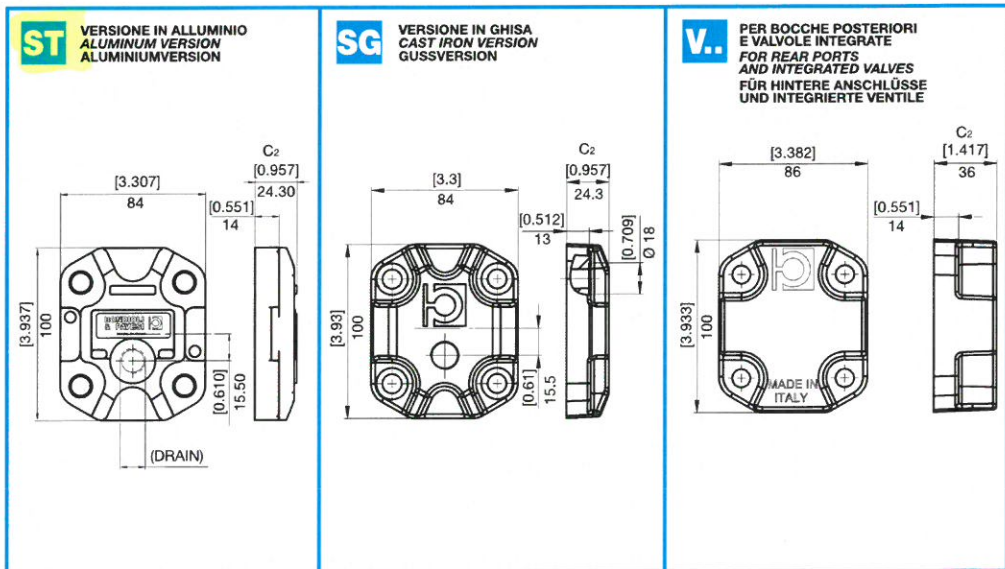
HPL...2



**DIMENSIONI
SIZE
ABMESSUNGEN**

GRUPPO GROUP BAUREIHE	TIPO TYPE TYP	A ₂		B ₂	
		mm	in	mm	in
	05	49,15	1,935	24,6	0,968
	06	51,85	2,041	25,9	1,021
	08	56,35	2,219	28,2	1,109
	11	60,85	2,396	30,4	1,198
	14	67,25	2,648	33,6	1,324
2	17	71,75	2,825	35,9	1,412
	20	76,25	3,002	38,1	1,501
	26	88,55	3,486	44,3	1,743
	34	102,55	4,037	51,3	2,019
	40	115,07	4,530	57,5	2,265

**COPERCHI
COVERS
DECKEL**

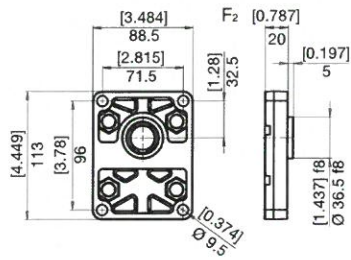


FLANGE
FLANGES
FLANSCH

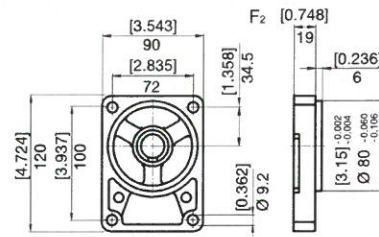
VERSIONE IN ALLUMINIO
ALUMINUM VERSION
ALUMINIUMVERSION

HPL..2

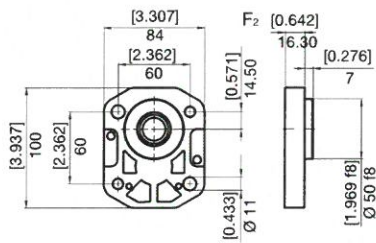
M



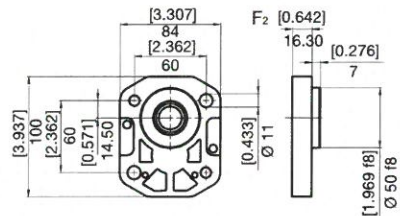
N



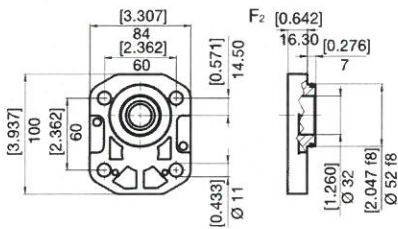
O



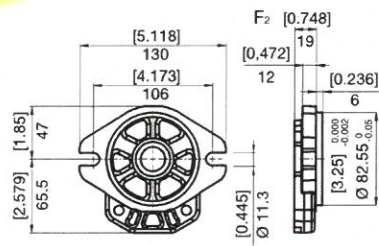
P



R



S



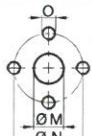
**PROFILO ALBERI
SPLINE SHAFTS
WELLENPROFILE**


HPL..2

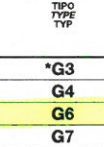
<p>L COPPIA MAX MAX TORQUE MAX DREHMOMENT 140 N•m</p> <p>Coppia di serraggio = 50 N•m Tightening torque = 50 N•m Anzugsmoment = 50 N•m</p>	<p>M COPPIA MAX MAX TORQUE MAX DREHMOMENT 120 N•m</p> <p>Coppia di serraggio = 50 N•m Tightening torque = 50 N•m Anzugsmoment = 50 N•m</p>
<p>N COPPIA MAX MAX TORQUE MAX DREHMOMENT 65 N•m</p>	<p>P COPPIA MAX MAX TORQUE MAX DREHMOMENT 70 N•m</p>
<p>U COPPIA MAX MAX TORQUE MAX DREHMOMENT 110 N•m</p> <p>VERSIONE BOSCH BOSCH VERSION BOSCH-VERSION</p>	<p>U COPPIA MAX MAX TORQUE MAX DREHMOMENT 80 N•m</p>
<p>V COPPIA MAX MAX TORQUE MAX DREHMOMENT 120 N•m</p>	<p>X COPPIA MAX MAX TORQUE MAX DREHMOMENT 160 N•m</p>
<p>Y COPPIA MAX MAX TORQUE MAX DREHMOMENT 310 N•m</p>	<p>Z COPPIA MAX MAX TORQUE MAX DREHMOMENT 70 N•m</p>

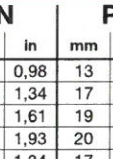
**BOCCHIE
PORTS
ANSCHLÜSSE**

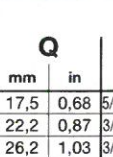
HPL..2

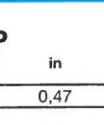
E	LATERALE LATERAL SEITLICH		TIPO TYPE TYP	M		N		O	
				mm	in	mm	in		Nm
			E3	13	0,51	30	1,18	M6	10
E5	20	0,79	40	1,57	M8	15			

X	LATERALE LATERAL SEITLICH		TIPO TYPE TYP	M		N		O	
				mm	in	mm	in		Nm
			X4	15	0,59	35	1,38	M6	10
			X5	15	0,59	40	1,57	M6	10
			X6	20	0,79	40	1,57	M6	10
X8	27	1,06	55	2,17	M8	15			

G T	LATERALE LATERAL SEITLICH POSTERIORE REAR HINTEN		TIPO TYPE TYP	M		P	
					Nm	mm	in
			*G3	3/8" GAS BSPP	38	12	0,47
			G4	1/2" GAS BSPP	50	16	0,63
			G6	3/4" GAS BSPP	90	19	0,75
			G7	1" GAS BSPP	130	19	0,75
			T4	1/2" GAS BSPP	50	14,5	0,63
T6	3/4" GAS BSPP	40	19	0,75			

U C	LATERALE LATERAL SEITLICH POSTERIORE REAR HINTEN		TIPO TYPE TYP	DIMENSIONE SIZE GRÖSSE		N		P		Q		M	
				mm	in	mm	in	mm	in			Nm	
			*U3	3/8"	25	0,98	13	0,51	0,3	0,01	9/16-18 UNF	25	
			U5	5/8"	34	1,34	17	0,67	0,3	0,01	7/8-14 UNF	70	
			U6	3/4"	41	1,61	19	0,75	0,3	0,01	1-1/16-12 UNF	90	
			U7	1"	49	1,93	20	0,79	0,3	0,01	1-5/16-12 UNF	130	
			C5	5/8"	34	1,34	17	0,67	0,3	0,01	7/8-14 UNF	70	
			C6	3/4"	41	1,61	19	0,75	0,3	0,01	1-1/16-12 UNF	40	

N	LATERALE LATERAL SEITLICH		TIPO TYPE TYP	DIMENSIONE SIZE GRÖSSE		M		P		Q		O	
				mm	in	mm	in	mm	in			Nm	
			N4	1/2"	13	0,51	38,1	1,49	17,5	0,68	5/16-18UNC-2B	15	
			N6	3/4"	20	0,79	47,6	1,87	22,2	0,87	3/8"-16UNC-2B	25	
			N7	1"	27	1,06	52,4	2,60	26,2	1,03	3/8"-16UNC-2B	30	

M		TIPO TYPE TYP	M		P	
				Nm	mm	in
*M2	M14x1,5	17	12	0,47		

* Drenaggio

* Drain Port

* Lecköl

COMBINAZIONI
COMBINATIONS
KOMBINATIONEN

HPL..2

ESTREMITÀ ALBERO SHAFT PROFIL WELLENENDE	FLANGE FLANGE FLANSCH							
	M	N	O	R	S	T	U	
L	■							
M		■		[1.602] 40.70				
N	■							
P					■			
U	■		[0.925] 23.50	[1.031] 26.20				
V					■			
X					■			
Y						■		
Z				■				[0.394] 10 [0.126] 3.2
BOCCHE PORTS ANSCHLÜSSE								
E	■							
G	■				■	■	■	
X		■	■	■				
U					■	■		
N					■	■		
C					■	■		
T	■	■	■	■	■	■	■	